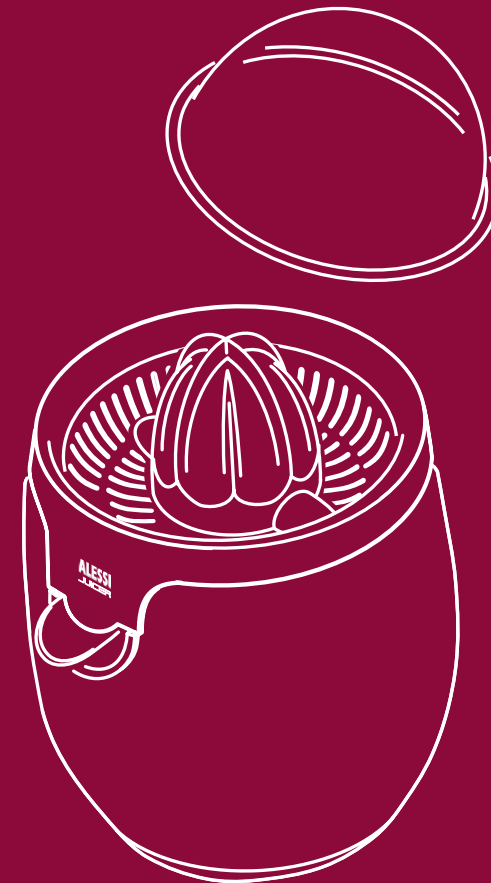


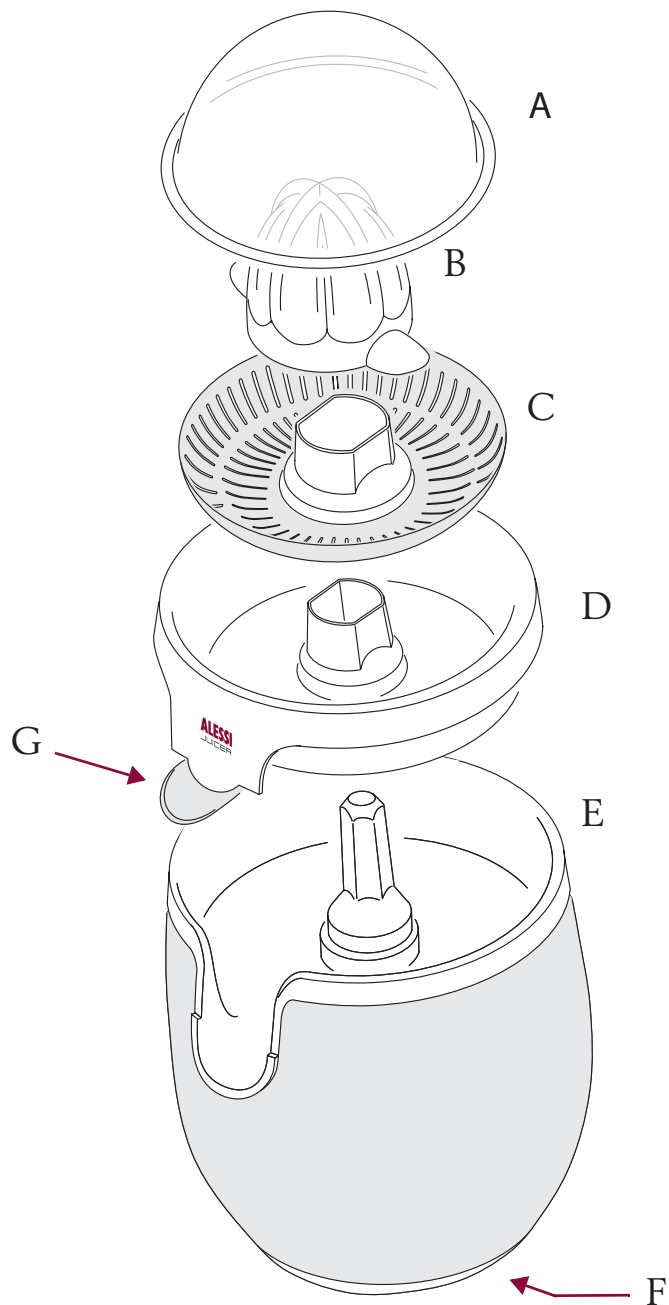
ALESSI



ALESSI

Alessi s.p.a. 28887 Crusinallo (VB) Italia
Tel. 0039 0323 868611 - Fax 0039 0323 641605
www.alessi.com - E-mail: sac.alessi@alessi.com

SG63
design Stefano Giovannoni
2003



IMPORTANT SAFEGUARDS

When using electrical appliances, basic safety precautions should always be followed to reduce the risk of electric shock and/or injury to persons, including the following:

- 1 READ ALL INSTRUCTIONS BEFORE USING THE PRODUCT.
- 2 Ensure that your mains supply voltage is the same as marked on the typeplate of your appliance.
- 3 To protect against risk of electrical shock do not immerse power cord, plug or motor unit in water or other liquid.
- 4 Use a dry cloth to clean the motor unit.
- 5 Unplug from outlet when not in use, before fitting or removing parts and before cleaning.
- 6 In order to avoid any hazard, do not operate the product with a damaged cord or plug, or after the appliance has malfunctioned or been damaged in any way. Return the appliance to the nearest authorized service facility for inspection, repair or electrical or mechanical adjustment.
- 7 Close supervision is necessary when the appliance is used by or near children.
- 8 The use of accessory attachments not recommended or sold by the manufacturer may cause fire, electric shock or injury.
- 9 Do not use outdoors.
- 10 Do not let the cord hang over the edge of tables or counters or anywhere it may be accidentally caught or tripped over.
- 11 Do not let the cord touch hot surfaces such as stoves.
- 12 Do not place the product on or near hot gas burners or electric burners, or in a heated oven.
- 13 After unpacking the appliance, be sure to dispose carefully of the plastic bags so that they are out of the reach of children and the infirm.
- 14 Do not use the appliance for purposes other than those intended.
- 15 To disconnect the juicer, wait until the motor stops, then remove the plug from the wall outlet.

**THIS PRODUCT IS INTENDED FOR
HOUSEHOLD USE ONLY**

SAVE THESE INSTRUCTIONS

- SHORT CORD SET INSTRUCTIONS
- A short power cord is provided to reduce the risks resulting of becoming entangled in or tripping over a long cord.
- Longer, detachable power supply cords or extension cords are available and may be used if care is exercised in their use.
- If an extension cord is used, the marked electrical rating should be at least equal to the appliance electrical rating. If the appliance is provided with earthed type 3-wire cord, the extension should be a **GROUNDING TYPE 3-WIRE CORD**. The longer cord should be arranged so that it does not hang over the counter top or table where it can be pulled on by children or tripped over.

For U.K. and Ireland only:

This appliance is supplied with a non-rewirable 13 Amp. plug.

The plug must never be used without fitting the fuse cover.

If a replacement fuse cover is required, it must be of the same type or colour as the coloured insert around the fuse cover.

Replacement fuse covers are available from Electrical Retailers.

Replacement 13 Amp. fuses must be BSI or ASTA BS 1362 approved.

Important safety information

If the non-rewirable plug is not suitable for the socket outlets in your home, it can be removed and replaced by a plug of the correct type.

The non-rewirable plug must be cut from the mains cord, the fuse removed, and the plug safely discarded to prevent further use.

The removed plug can be hazardous if inserted into a live mains socket.

Fitting a Plug

IMPORTANT: The wires in the mains lead are coloured according to the following code:

BLUE - NEUTRAL

BROWN - LIVE

As the colours of the wires in the mains lead of this appliance may not correspond with the markings identifying the terminals in your plug, proceed as follows:

The BLUE wire must be connected to the terminal which is marked with the letter "N" or coloured BLACK.

The BROWN wire must be connected to the terminal which is marked with the letter "L" or coloured RED.

DO NOT CONNECT either of these wires to the earth terminal in the plug marked with the letter "E" or with the earth symbol or coloured GREEN, or GREEN and YELLOW.

If a 13 Amp. 3-pin plug is fitted, it must be an "approved" plug, in compliance with BS 1363-1986.

Note: If the plug terminals are unmarked or if you are in any doubt, consult a qualified electrician

SG63

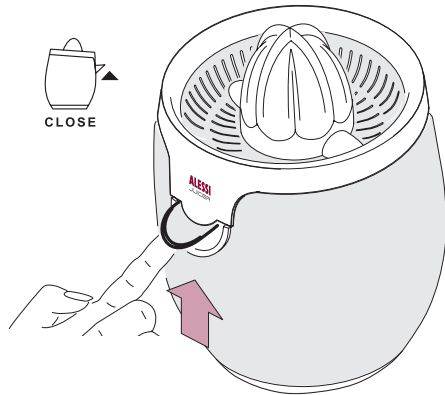
ALESSI

Model: **SG63** Type:01
220-240 V ~ 50-60 Hz 85 W
Ser. Nr



CLOSED: Flip the spout up to close the container so that the juice does not drip.

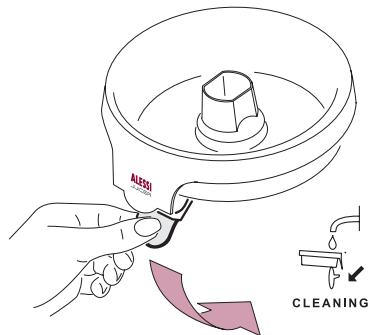
Fig. 4



CLEANING: Flip the spout right down to wash the container.

NOTE: to lower the spout to the CLEANING position, the container must be removed from the motor unit (see Fig. 1). The spout cannot be detached from the container.

Fig. 5



CAUTION

Before using the citrus juicer, carefully read and follow the instructions for use. Keep and consult the instructions for use for the entire working life of the appliance.

After unpacking the citrus juicer, ensure that all components are in perfect condition.

Check that the voltage of your electrical system corresponds to the value specified on the bottom of the citrus juicer motor unit.

Do not immerse the cord, plug or motor unit in water or other liquids.

Do not use the citrus juicer in bathrooms or near other sources of water.

Do not let the cord hang from the work top.

Never use the juicer continuously for longer than 10 minutes.

Like all electrical household appliances, it must not be used outdoors.

KEEP THE APPLIANCE OUT OF THE REACH OF CHILDREN.

In the event of malfunctioning, and in particular if the cord gets damaged, contact your Alessi dealer and in the meantime do not use the citrus juicer.

Unplug the appliance when not in use, before fitting or removing components and before cleaning it.

Do not place the cord or the appliance itself near cooker tops, stoves or heat sources in general.

Do not use the citrus juicer for purposes other than those scheduled.

Alessi accepts no liability for damage due to inappropriate use.

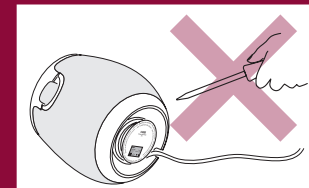
Do not use adapters or extensions that do not comply with the safety regulations in force or which exceed the voltage limits of the appliance (220-240 V).

Never use the appliance if parts of it are damaged, in particular the cord and plug, or if an operating fault has occurred.

Do not leave the packaging lying around and keep all plastic bags out of the reach of children.

At the end of its working life, the appliance must be correctly disposed of to prevent pollution of the environment; disassemble its components so that they can be eliminated in compliance with the disposal regulations in force in your country.

Never attempt to open the motor unit by forcing it.



THIS PRODUCT IS FOR HOUSEHOLD USE ONLY.

This appliance is not intended for use by persons (including children) with reduced physical, sensory or mental capabilities, or lack of experience and knowledge, unless they have been given supervision or instruction concerning use of the appliance by a person responsible for their safety.

CHILDREN SHOULD BE SUPERVISED TO ENSURE THAT THEY DO NOT PLAY WITH THE APPLIANCE.

BEFORE USING FOR THE FIRST TIME

- Disassemble the removable parts (cover, cone, filter, container).

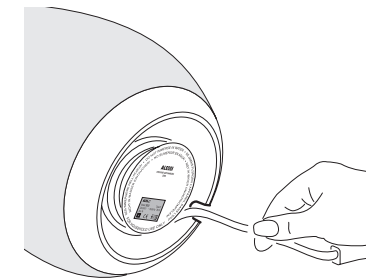
- Wash them with warm water and washing-up liquid.
- Rinse and dry thoroughly.
- Refit container, filter and cone.

NOTE: do not immerse the cord, plug or motor unit in water or other liquids.

USE

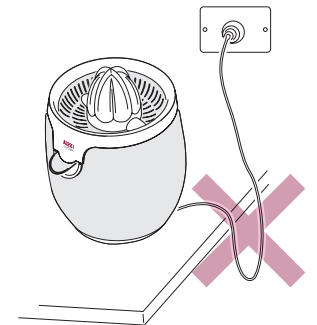
- Check that the voltage of your electrical system corresponds to the value specified on the bottom of the citrus juicer motor unit.
- Plug the appliance in.
- If necessary, wind the excess cord around the cord wrap and secure in the groove provided.

Fig. 6



- Ensure that the citrus juicer is in a stable position on the work top and that it is out of the reach of children. Also check that the cord is not hanging from the work top.

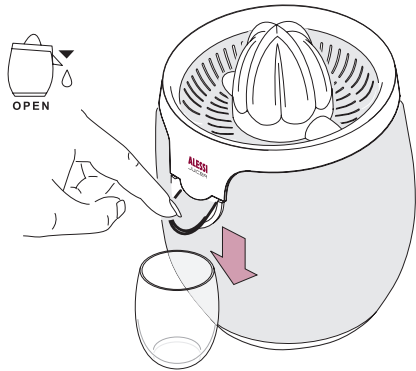
Fig. 7



- Remove the cover.
- Place a glass or a container below the spout.

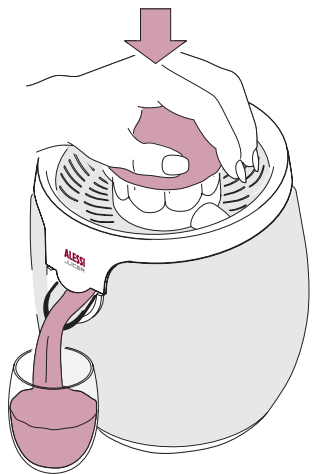
- Flip the spout down to the OPEN position.

Fig. 8



- Cut the fruit to be squeezed in half so that it can be easily positioned on the cone.
- Press the fruit firmly onto the cone with your hand. The motor will start automatically, the cone will begin to rotate and the juice will flow into the glass.

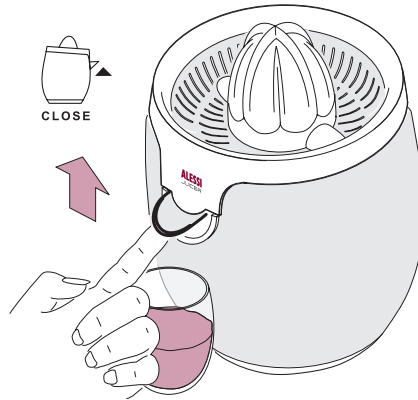
Fig. 9



- Take your hand off the fruit to stop the motor.

- To prevent the remaining juice dripping when you change glass, or after use, flip the spout up.

Fig. 10

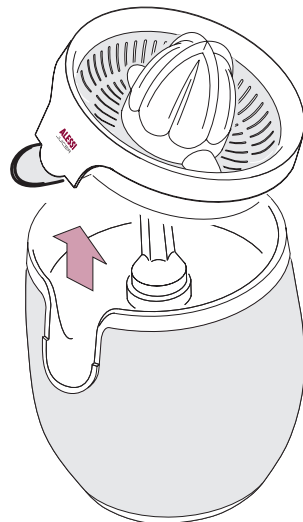


CLEANING

NOTE: clean the appliance immediately after use to prevent the remains drying on and becoming difficult to remove.

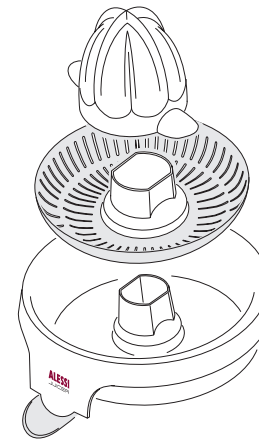
- UNPLUG THE APPLIANCE.
- Disassemble the removable parts, gripping the container, and place them in the sink.

Fig. 11



- Disassemble cone, filter and container.

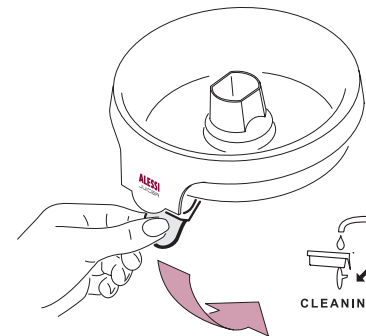
Fig. 12



- Flip the container spout down into the CLEANING position.

NOTE: the spout cannot be detached from the container.

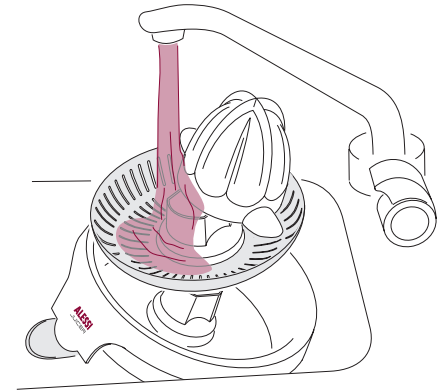
Fig. 13



- Wash the cone, filter and container with warm water and washing-up liquid.

- Rinse and dry thoroughly.

Fig. 14



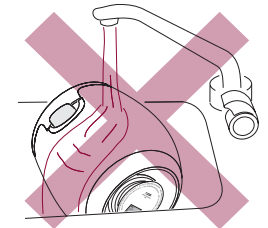
NOTE: the cone, filter and container can be washed in the dishwasher but remember that the detergents and additives used, and also the temperatures reached during the washing cycle, can damage the surface finish of the product.

- Clean the motor unit with a damp cloth.

CAUTION



Never immerse the motor unit in water and do not rinse it under running water.



- Rewind the cord around the cord wrap and secure in the groove provided.

CAUTION



If the cord becomes damaged, contact your Alessi dealer for replacement. Never attempt to open or tamper with the motor unit.

TROUBLESHOOTING

In the event of faulty operation or if in doubt, contact your Alessi dealer and in the meantime do not use the citrus juicer.

The following hints may be useful for solving small problems, often caused simply by carelessness:

- **If the motor does not start:**

- have you plugged the appliance in?
- does the voltage of your electrical system correspond to the value specified on the bottom of the motor unit?
- have you correctly refitted the cone, filter and container?
- have you exerted sufficient pressure on the cone?

If the problem persists, contact your Alessi dealer and do not attempt to tamper with the appliance in the meantime.

- **If you are unable to refit the container:**

- have you re-set the spout from the CLEANING position to the OPEN (see *Fig. 3*) or CLOSED (see *Fig. 4*) position?

- **If the juice leaks out of the side of the container:**

- have you lowered the spout to the OPEN position? (see *Fig. 3*)
- have you checked that the filter is not obstructed by remains of fruit?

SPARE PARTS

You can request the following components from your Alessi dealer and easily replace them on your own:

- cover (A)
- cone (B)
- filter (C)
- container (D)