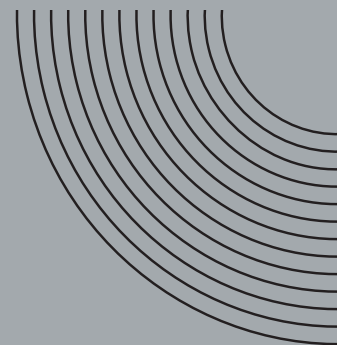


FINITURE E TESSUTI

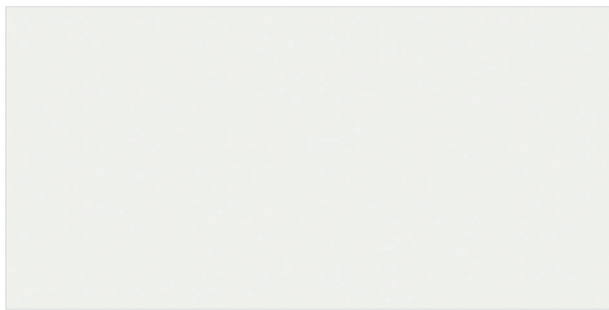
FINISHES & FABRICS

TAVOLI
SEDIE
SGABELLI
LETTI IN FERRO

TABLES
CHAIRS
BARSTOOLS
IRON BEDS



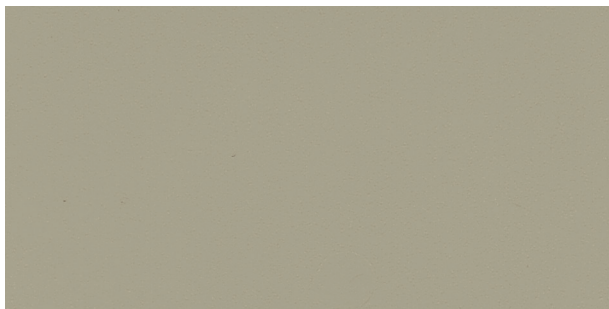
INGENIA[®]
CASA



Z031 Bianco | White | Blanc | Weiß | Blanco | Белый



Z006 Grigio chiaro | Light grey | Gris clair | Hell grau | Gris claro | Светло-серый



Z029 Sabbia | Sand | Sable | Sand | Arena | Песочный



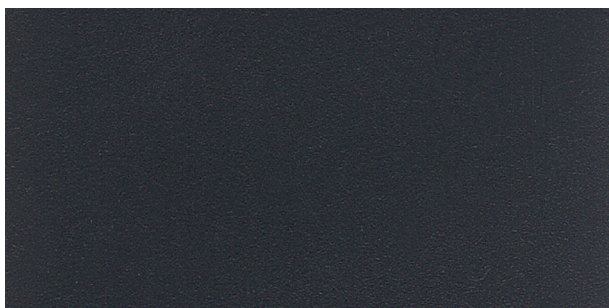
Z009 Giallo senape | Mustard yellow | Moutarde | Senf | Amarillo mostaza | Желтая горчица



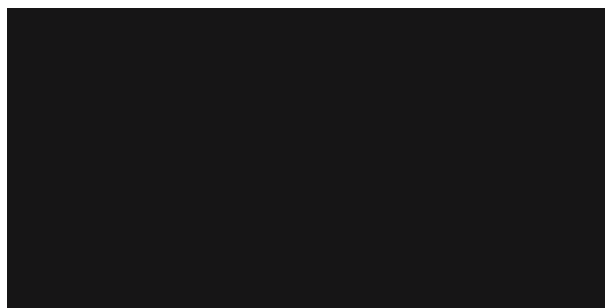
Z008 Caramello | Caramel | Caramel | Karamell | Caramelo | Карамель



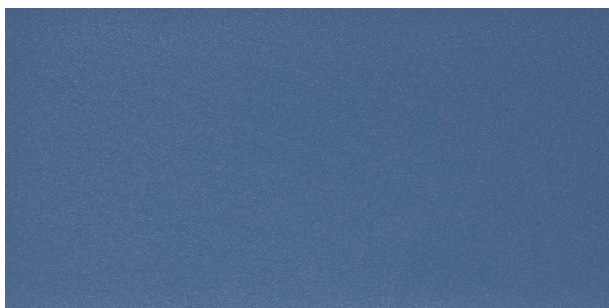
Z007 Azzurro polvere | Dusty blue | Gris bleu | Puder blau | Azul polvo | Синий порошок



Z039 Antracite | Anthracite | Anthracite | Anthrazit | Antracita | Антрацит



Z038 Nero | Black | Noir | Schwarz | Negro | Черный
Z005 Nero laccato soft velvet | Soft touch black | Noir laqué soft touch | Schwarz soft velvet lackiert | Negro soft touch | Черный лакированный мягкий бархат



Z079 Blu colomba laccato soft velvet | Soft touch Pigeon blue | Blue Pigeon laqué soft touch | Taubenblau soft velvet lackiert | Azul Colombino soft touch | Синий голубь лакированный мягкий бархат

N.B.: I campioni colore sono da considerarsi indicativi per ciascun prodotto in quanto il colore può subire variazioni in funzione degli spessori e della composizione dei materiali utilizzati.
Use card as example, colours may change according to materials used.

UNICOLOR ANTIGRAFFIO

SCRATCH-RESISTANT UNICOLOR | UNICOLOR ANTI-RAYURES | KRATZFESTIG UNICOLOR | UNICOLOR ANTI-ARAÑAZOS | UNICOLOR УСТОЙЧИВЫЙ К ЦАРАПИНАМ



D007 Bianco | White | Blanc | Weiß | Blanco | белый



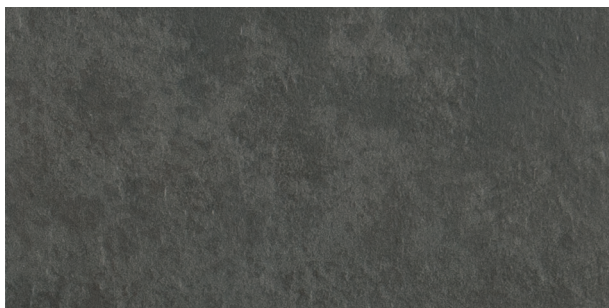
D004 Pietra di Nanto | Nanto's stone | Pierre de Nanto | Nanto Stein | Piedra de Nanto | Камень nanto



D005 Porfido | Porphyry | Porphyre | Porphyr | Porfido | Порфир



D006 Pietra lavica | Lava stone | Pierre de Lave | Lava Stein | Piedra Lavica | Лавовый камень



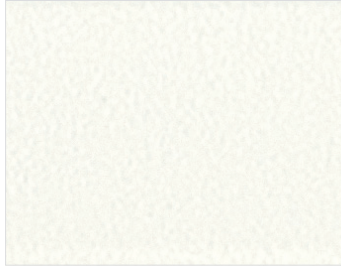
D003 Brown stone | Brown stone | Brown stone | Brauner Stein | Piedra Marrón | Коричневый камень

METALLO

METAL | MÉTAL | METALLE | METAL | МЕТАЛЛЫ



M089 Alluminio | Aluminium | Aluminium |
Aluminium | Aluminio | Алюминий



M306 Bianco | White | Blanc | Weiß |
Blanco | Белый



M312 Sabbia | Sand | Sable | Sand | Arena |
Песочный



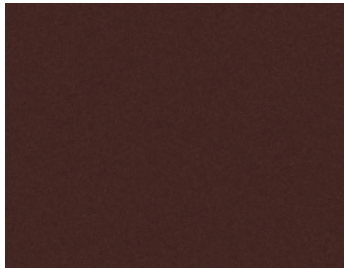
M318 Celeste | Light blue | Bleu clair |
Hell blau | Celeste | лазурный



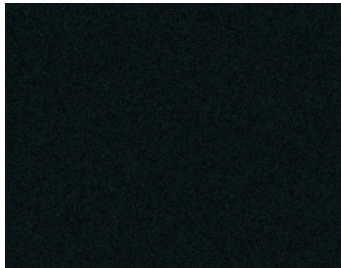
M316 Blu | Blue | Bleu | Blau | Azul |
Синий



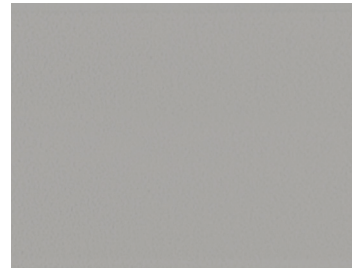
M310 Antracite | Anthracite | Anthracite |
Anthrazit | Antracita | Антрацит



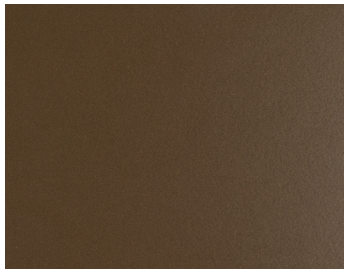
M307 Testa di moro | Dark brown |
Marron foncé | Dunkelbraun | Marrón
oscuro | Темно-коричневый



M055 Nero | Black | Noir | Schwarz |
Negro | Черный



M097 Grigio chiaro | Light grey | Gris clair |
Hell grau | Gris claro | Светло-серый



M028 Ottone scuro | Dark brass |
Laiton foncé | Dunkelmessing |
Latón oscuro | Темная латунь



M030 Titanio | Titanium | Titane | Titan |
Титан

LEGGNO: MASSELLO | MASSELLATO | IMPIALLACCIATO | LACCATO



WOODS: solid/veener with solid wood edge/veener/lacquered | BOIS: massif/plaqué avec bords en bois massif/plaqué/laqué |
HOLZ: Massivholz/furniert mit massiv Holz Rand/furniert/lackiert | MADERA: maciza/chapada con cantos en madera maciza/
chapada/lacada | ДЕРЕВО: массив/шпон с краями из массива/шпон/лакированное

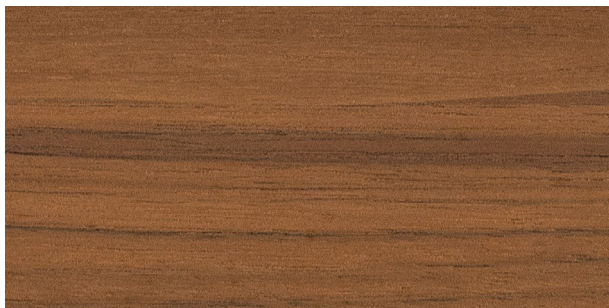


L002 Rovere Spessart impiallacciato | Spessart oak veneer |
Chêne Spessart plaqué | Eiche Spessart furniert |
Roble Spessart chapado | Шпон из дуба Spessart



L009 Rovere naturale impiallacciato | Natural oak veneer |
Chêne naturel plaqué | Eiche Natur furniert | Roble natural chapado |
Шпон из натурального дуба

L209 Rovere naturale massellato | Natural oak veneer with solid wood edge |
Chêne naturel plaqué avec bords en bois massif |
Eiche Natur furniert mit massiv Rand | Roble natural chapado con cantos de
madera maciza | Шпон из натурального дуба с краями из массива

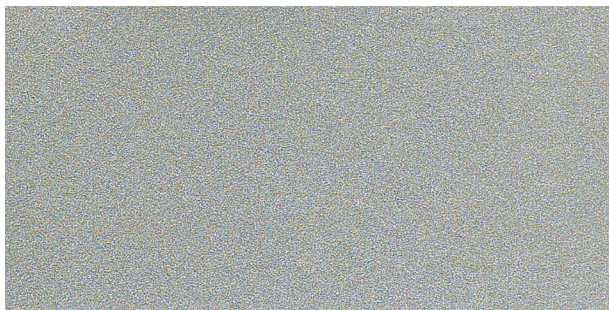


L036 Noce impiallacciato | Walnut veneer | Noyer plaqué | Nußbaum furniert |
Nogal chapado | Шпон Орех

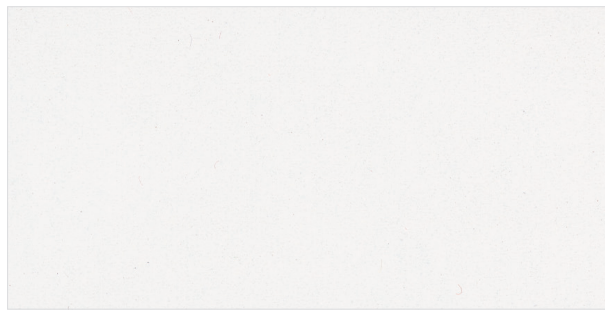
L206 Noce Massellato | Walnut veneer with solid wood edge |
Noyer plaqué avec bords en bois massif | Nußbaum furniert mit massiv Rand |
Nogal chapado con cantos de madera maciza |
Шпон Орех с краями из массива

LEGNI E MELAMINICI

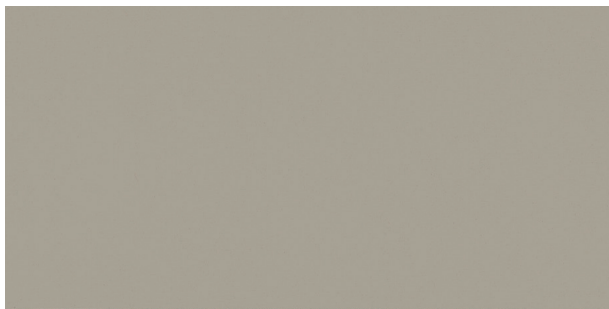
WOODS AND MELAMINES | BOIS ET MÉLAMINES | HOLZ UND MELAMIN | MADERAS Y MELAMINAS | ДЕРЕВО И МЕЛАМИН



L072 Melaminico alluminio | Melamine aluminium | Mélamine aluminium | Melamin Alufarbig | Melamina aluminio | Меламин алюминий



L079/L043 Legno laccato bianco/Melaminico bianco | White gloss lacquered wood/Melamine white | Bois laqué blanc/Mélamine blanc | Holz weiß lackiert/Melamin weiss | Madera lacada blanco/Melamina blanca | Дерево лакированное белое/Меламин белый



L084/L044 Legno laccato sabbia/Melaminico sabbia | Sandlacquered wood/Melamine sand | Bois laqué sable/Mélamine sable | Holz sand lackiert/Melamin sand | Madera lacada arena/Melamina arena | Дерево лакированное песочное/Меламин песочный



L087/L045 Legno laccato antracite/Melaminico antracite | Anthracite lacquered wood/Melamine anthracite | Bois laqué anthracite/Mélamine anthracite | Holz anthrazit lackiert/Melamin anthrazit | Madera lacada antracita/Melamina antracita | Дерево лакированное антрацит/Меламин антрацит

MELAMINICO MATERICO

MELAMINE | MÉLAMINE | MELAMIN | MELAMINA | МЕЛАМИН

INGENIA[®]
CASA



L058 Cemento sabbia | Concrete sand | Béton sable | Zement sand |
Cemento arena | Цемент песок



L059 Cemento talpa | Concrete grey | Béton taupe | Zement grau |
Cemento gris topo | Цемент крог



L055 Canyon oak | Canyon oak | Chêne Canyon | Eiche Canyon |
Roble canyon | Дуб каньон



L054 Cemento naturale | Natural concrete | Béton naturel | Zement natur |
Cemento natural | Цемент натуральный



L050 Larice grigio | Grey Larch | Mélèze gris | Lärche grau | Alerce Gris |
Серая Лиственница



L051 Barrique | Barrique | Barrique | Barrique | Barrica | Barrique

MELAMINICO MATERICO

4^{BIS}

CRISTALLO

GLASS | VERRE | GLAS | CRISTAL | СТЕКЛО

INGENIA
CASA



C150 Extrawhite lucido | Glossy Extrawhite | Extrawhite brillant | Extraweiß hochglänzend | Extrawhite | Экстра-белое глянцевое



C180S Velvet antigraffio bianco opaco | Velvet matt anti-scratch white | Velvet anti-rayures blanc opaque | Kratzfestig velvet weiß matt | Velvet anti-arañazos blanco opaco | Вельвет, устойчивое к царапинам, матовое белое



C193 Laccato tortora lucido | Glossy dove grey lacquered | Laqué gris tourterelle brillant | Hochglänzend taubengrau lackiert | Lacado gris ceniciento brillo | Лакированное серо-бежевое глянцевое



C181S Velvet antigraffio tortora opaco | Velvet matt anti-scratch dove grey | Velvet anti-rayures gris tourterelle opaque | Kratzfestig velvet taubengrau matt | Velvet anti-arañazos gris ceniciento opaco | Вельвет, устойчивое к царапинам, матовое серо-бежевое



C192 Laccato testa di moro lucido | Glossy dark brown lacquered | Laqué marron foncé brillant | Hochglänzend dunkelbraun lackiert | Lacado marrón brillo | Лакированное темно-коричневое глянцевое



C182S Velvet antigraffio testa di moro opaco | Velvet matt anti-scratch dark brown | Velvet anti-rayures marron foncée opaque | Kratzfestig velvet dunkelbraun matt | Velvet anti-arañazos marrón oscuro opaco | Вельвет, устойчивое к царапинам, матовое темно-коричневое



C196 Laccato antracite lucido | Glossy anthracite lacquered | Laqué anthracite brillant | Hochglänzend anthrazit lackiert | Lacado antracita brillo | Лакированное антрацит глянцевый



C183S Velvet antigraffio antracite opaco | Velvet matt anti-scratch anthracite | Velvet anti-rayures anthracite opaque | Kratzfestig velvet anthrazit matt | Velvet anti-arañazos antracita opaco | Вельвет, устойчивое к царапинам, матовое антрацит



C152 Laccato nero lucido | Glossy black lacquered | Laqué noir brillant | Hochglänzend schwarz lackiert | Lacado negro brillo | Лакированное черное глянцевое

5 CRISTALLO

N.B.: I campioni colore sono da considerarsi indicativi per ciascun prodotto in quanto il colore può subire variazioni in funzione degli spessori e della composizione dei materiali utilizzati.
Use card as example, colours may change according to materials used.

CRISTALLO

GLASS | VERRE | GLAS | CRISTAL | СТЕКЛО



C166 Laccato grigio chiaro lucido | Gloss light grey lacquered |
Gris clair brillant | Hochglänzend hell grau lackiert |
Lacado gris claro brillo | Глянцевое лакированное светло-серое



C186S Velvet antigraffio grigio chiaro opaco | Velvet matt anti-scratch
light grey lacquered | Velvet anti-rayures gris clair opaque |
Velvet kratzfestig hell grau matt lackiert |
Velvet anti-arañazos gris claro opaco |
Вельвет, устойчивое к царапинам, матовое светло-серое

Il cristallo velvet antigraffio è caratterizzato dalla finitura opaca che lo rende caldo e piacevole al tatto generando un effetto seta, vellutato e morbido.

Il cristallo viene sottoposto ad uno speciale trattamento chimico fisico adoperato grazie ad una tecnologia di ultima generazione denominata “corrosione dinamica” che rende più difficoltosa la formazione di possibili graffi solitamente più evidenti sulle superfici lisce.

Anti scratch velvet glass is characterized from a matt finish that makes it warm and pleasant to touch, creating a “silk effect”, soft and smooth.

The scratch-resistant glass surface is treated with a specific chemical treatment thanks to an ultimate technology called “dynamic corrosion” that allow smoothing of micro ridges generated by common etching. The smoothing of the ridges deters the appearance of scratches.



MORBIDEZZA AL TATTO | WARM AND PLEASANT TO TOUCH



ELEVATA RIPARABILITÀ DEI GRAFFI | SCRATCHES HIGH REPARABILITY



METODO DI PULIZIA E MANUTENZIONE

Per la pulizia di questi piani si consiglia di intervenire con un panno morbido e schiuma attiva per vetri e cristalli.

Non spruzzare direttamente il prodotto sul piano ma sul panno.

Non usare prodotti oleosi, grassi e diluenti.

Nel caso in cui vengano versati sul piano liquidi particolarmente aggressivi o macchianti quali ad esempio: vino, coca-cola, succhi di frutta, aceto, limone etc... rimuovere immediatamente il liquido con un panno morbido e schiuma attiva per vetri e cristalli come precedentemente indicato.

L'azienda produttrice non sarà responsabile per danneggiamenti derivanti dall'utilizzo non corretto del prodotto o dalla pulizia effettuata con agenti smacchianti diversi da quelli indicati con le specifiche modalità.

CLEANING AND MAINTENANCE INSTRUCTIONS

For daily cleaning, use a soft cloth dampened with an approved product for glass cleaning.

Do not spray the product directly on the glass top. Instead, spray the cloth and gently wipe the glass.

Do not use oily, greasy or thinner products.

In the event of an accidental spill of liquids such as wine, carbonated beverages, juices, vinegar, lemon and so on, clean the spill with the soft cloth dampened with the approved glass cleaner.

For a larger spill, absorb some of the liquid with a quality paper towel, then proceed with cleaning with the soft cloth.

Company will not be responsible for damages due to improper cleaning procedures.

SUPERCERAMICA

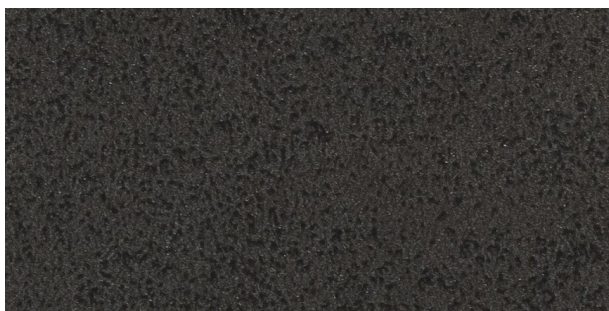
SUPERCERAMIC | SUPERCERAMIQUE | SUPERKERAMIK | SUPERCERAMICA | СУПЕРКЕРАМИКА



CR003/CR003A Bianco | White | Blanc | Weiß | Blanco | белый



CR005/CR005A Sabbia | Sand | Sable | Sand | Arena | Песочный



CR002/CR002A Antracite | Anthracite | Anthracite | Anthrazit | Antracita | Антрацит



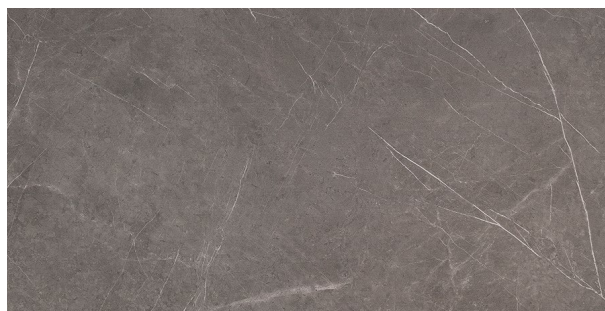
CR006/CR006A Grigio Savoia | Savoia Grey | Gris Savoia | Grau Savoia | Gris Savoia | серый Савойя

SUPERMARMO

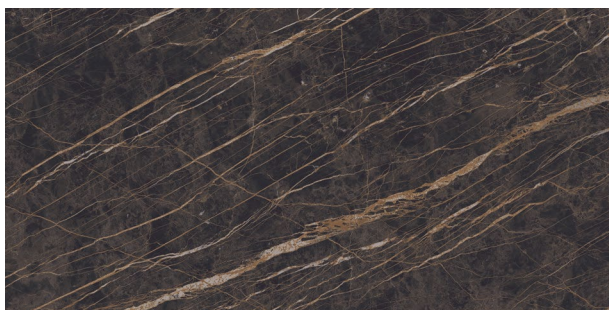
SUPERMARBLE | SUPERMARBRE | SUPERMARMOR | SUPERMÁRMOL | СУПЕРМАРОМ



CM007/CM007A Bianco Statuario Opaco | Matt White | Blanc Opaque | Matt Weiß | Blanco Opaco | матовый Скульптурный белый



CM002/CM002A Grigio Serena Opaco | Matt Grey | Gris Opaque | Matt Grau | Gris Opaco | Серый серена матовый



CM005/CM005A Noir Desir lucido | Glossy Noir Desir | Noir Desir brillant | Noir Desir hochglänzend | Cava Noir Desir brillo | Noir Desir глянцевый

SUPERCERAMICA . SUPERMARMO

SUPERCERAMIC | SUPERCERAMICA | SUPERKERAMIK | SUPERCERAMICA | СУПЕРКЕРАМИКА
SUPERMARBLE | SUPERMARBRE | SUPERMARMOR | SUPERMÁRMOL | СУПЕРМАРОП



INFINITO | EVERLASTING



IDRO/OLEO REPELENTE | HYDRO OIL REPELLENT



IGIENICO/ATOSSICO | HYGIENIC/NON-TOXIC



INALTERABILE AGLI ACIDI | CHEMICAL RESISTANT



ANTIGRAFFIO/ELEVATA DUREZZA
RESISTANT/BREAKAGE RESISTANT ANTI-RAYURES



IGNIFUGO | FIRE RETARDANT



MINIMO SPESSORE MASSIMA RESISTENZA
MINIMUM THICKNESS MAXIMUM RESISTANCE



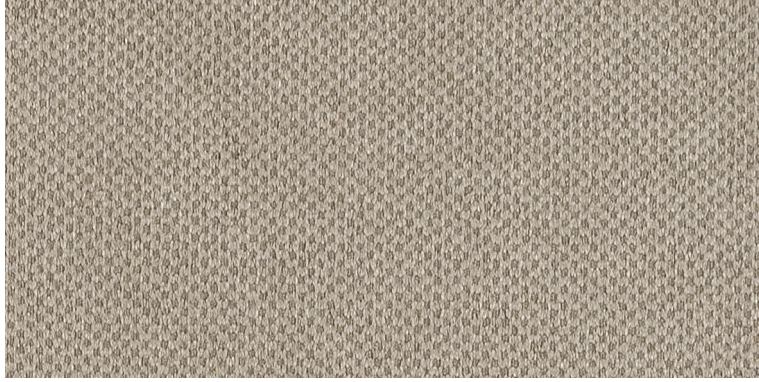
ECO-COMPATIBILE | ECO-FRIENDLY



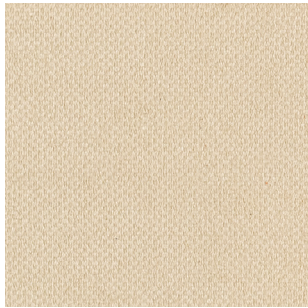
RICICLABILE | RECYCLABLE

TESSUTO PENNY

PENNY FABRIC | TISSU PENNY | STOFF PENNY | TELA PENNY | ТКАНЬ PENNY



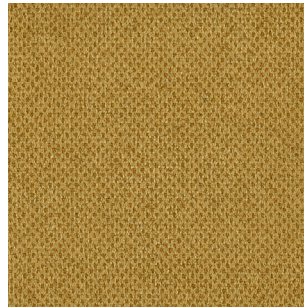
TPE02 Grigio chiaro | Light grey | Gris clair | Hell grau | Gris claro | Светло-серый



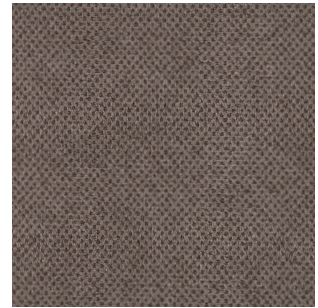
TPE01 Avorio | Ivory | Ivoire | Elfenbeinfarbe | Marfil | Слоновая кость



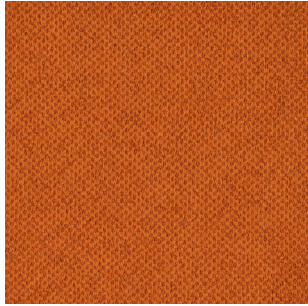
TPE03 Sabbia | Sand | Sable | Sand | Arena | Песочный



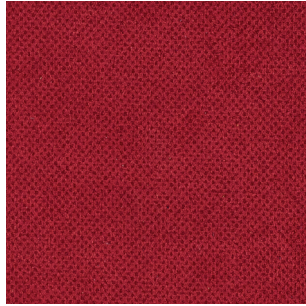
TPE05 Giallo senape | Mustard yellow | Moutarde | Senf | Amarillo mostaza | Желтая горчица



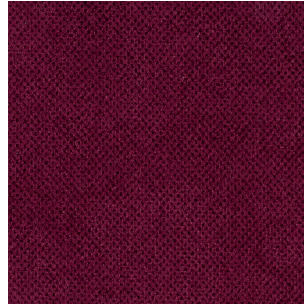
TPE04 Talpa | Grey | Gris | Grau | Gris | Серовато-Коричневый



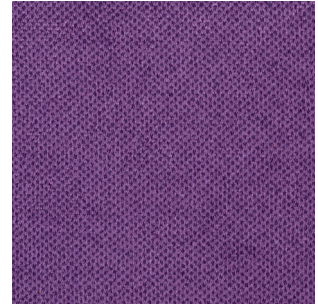
TPE06 Ruggine | Rust | Rouille | Rost | Óxido | Ржавчина



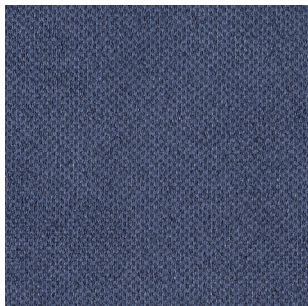
TPE09 Amarantho | Amaranth | Amaranth foncé | Amaranth | Amarantho | Амарант



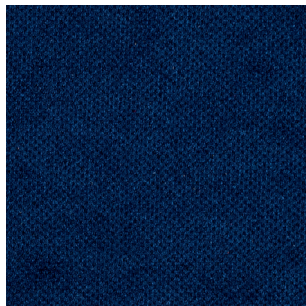
TPE08 Prugna | Prune | Prune | Pflaume | Ciruela | Слива



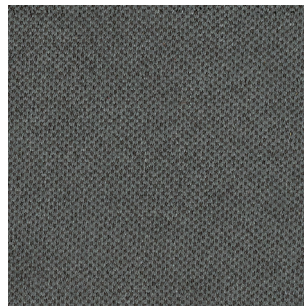
TPE07 Viola | Purple | Violet | Violet | Violetta | Фиолетовый



TPE10 Denim | Denim | Bleu denim | Denim | Azul denim | Деним синий



TPE11 Blu | Blue | Bleu | Blau | Azul | Синий



TPE12 Antracite | Anthracite | Anthracite | Anthrazit | Antracita | Антрацит



TPE13 Nero | Black | Noir | Schwarz | Negro | Черный

TESSUTO PENNY

PENNY FABRIC | TISSU PENNY | STOFF PENNY | TELA PENNY | ТКАНЬ PENNY

COMPOSIZIONE | COMPOSITION

100% poliestere | polyester | polyester | Polyester | poliéster | полиэстер

SIMBOLOGIA | LIST OF SYMBOLS



RITIRO STIMATO | ESTIMATED SHRINKAGE

0%

ALTEZZA | WIDTH

140 cm | 55.1 inch

SPESSORE | THICKNESS

1,0 mm | 0.04 inch

SOLIDITÀ DEL COLORE ALLO SFREGAMENTO | COLOUR FASTNESS TO RUBBING

crockmeter ISO 105 X12

secco-dry 4/5

umido-wet 4/5

SOLIDITÀ DEL COLORE ALLA LUCE ARTIFICIALE AD ALTE TEMPERATURE

COLOUR FASTNESS TO ARTIFICIAL LIGHT AT HIGH TEMPERATURE

xeno ISO 105 B06

5

SOLIDITÀ DEL COLORE ALLA LUCE ARTIFICIALE | COLOUR FASTNESS TO ARTIFICIAL LIGHT

xeno ISO 105 B02

4/5

RESISTENZA ALL'ABRASIONE | ABRASION RESISTANCE

Martindale EN ISO 5470-2

>100.000 cicli-rubs

RESISTENZA ALLE FLESSIONI | RESISTANCE TO FLEXURES

bally - UNI EN 13512

80.000 cicli-rubs

RESISTENZA ALLE FLESSIONI DOPO JUNGLE TEST (H336)

RESISTANCE TO FLEXURES AFTER JUNGLE TEST (H336)

UNI 4818/92 P.29A + UNI EN 13512

50.000 cicli-rubs



IGNIFUGO | FIRE RETARDANT

USA California Bull 117 sez.E



METODO DI PULIZIA | CLEANING INSTRUCTIONS

Per la pulizia, utilizzare un panno di cotone umido d'acqua.

For cleaning, use a cotton cloth dampened with water.

ECONABUK

ECONABUK | ECONABUK | НАБУК ЕСО | KUNSTNABUK | ЭКОЛОГИЧЕСКИЙ НУБУК



TBK04 Grigio | Grey | Gris | Grau | Gris claro | Серый



TBK01 Latte | Milk | Lait |
Milch Farbe | Blanco lechoso |
Молоко



TBK02 Sabbia | Sand | Sable | Sand |
Arena | Песочный



TBK03 Cipria | Old rose | Vieux rose |
Alte Rose | Rojo Viejo | Пудра



TBK05 Marrone | Brown | Marron |
Braun | Marrón | Коричневый



TBK06 Blu | Blue | Bleu | Blau | Azul |
Синий



TBK07 Antracite | Anthracite |
Anthracite | Anthrazit |
Antracita | Антрацит



TBK08 Cappuccino | Cappuccino |
Cappuccino | Cappuccino |
Capuchino | Капучино



TBK09 Terra rossa | Red earth |
Terre rouge | Rote Erde |
Tierra roja | Красная земля



TBK10 Verde muschio | Moss green |
Vert mousse | Moosgrün |
Verde musgo | Зелёный Мускус

ECONABUK

ECONABUK | ECONABUK | NABUK ECO | KUNSTNABUK | ЭКОЛОГИЧЕСКИЙ НУБУК

COMPOSIZIONE | COMPOSITION

100% poliestere | polyester | polyester | Polyester | poliéster | полиэстер

SIMBOLOGIA | LIST OF SYMBOLS



RITIRO STIMATO | ESTIMATED SHRINKAGE

0%

ALTEZZA | WIDTH

140 cm | 55.1 inch

SOLIDITÀ DEL COLORE ALLO SFREGAMENTO | COLOUR FASTNESS TO RUBBING

ISO 105 X12

secco-dry 4/5

umido-wet 4/5

RESISTENZA ALL'ABRASIONE | ABRASION RESISTANCE

ISO 12947-2

40.000 cicli-rubs – End point

RESISTENZA AL PILLING | PILLING RESISTANCE

ISO 12945-2

4

RESISTENZA ALLE FLESSIONI DOPO JUNGLE TEST (H336)

RESISTANCE TO FLEXURES AFTER JUNGLE TEST (H336)

UNI 4818/92 P.29A + UNI EN 13512

50.000 cicli-rubs



METODO DI PULIZIA | CLEANING INSTRUCTIONS

Per la pulizia, tamponare delicatamente con un panno di cotone inumidito con acqua. Non strofinare.

For cleaning, dab gently with a cloth dampened with water. Do not rub.

PELLE ECOLOGICA

ECOLEATHER | CUIR ÉCOLOGIQUE | KUNSTLEDER | ECOPIEL | ЭКОЛОГИЧЕСКАЯ КОЖА

INGENIA[®]
CASA



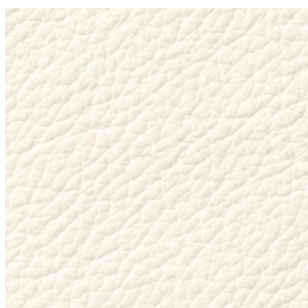
TR521 Verde chiaro | Light green | Vert clair | Hell Grün | Verde claro | Светло-зелёный



TR518 Sabbia | Sand | Sable | Sand | Arena | Песочный



TR523 Nocciola | Hazelnut | Noisette | Haselnuß | Avellana | Opex



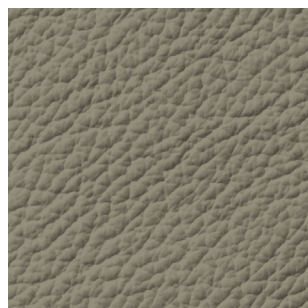
TR505 Bianco | White | Blanc | Weiß | Blanco | Белый



TR500 Avorio | Ivory | Ivoire | Elfenbeinfarbe | Marfil | Слоновая кость



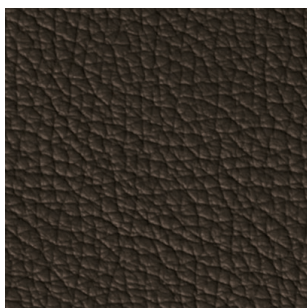
TR501 Beige | Beige | Beige | Beige | Beige | Беж



TR519 Fango | Mud | Vase | Schlammfärbig | Barro | Серо-коричневый



TR510 Marrone | Brown | Marron | Braun | Marrón | Коричневый



TR503 Testa di moro | Dark brown | Marron foncé | Dunkelbraun | Marrón oscuro | Темно-коричневый



TR502 Rosso | Red | Rouge | Rot | Rojo | Красный



TR509 Bordeaux | Bordeaux | Bordeaux | Bordeauxrot | Burdeos | Бордовый



TR525 Giallo | Yellow | Jaune | Gelb | Amarillo | Желтый



TR522 Cipria | Old rose | Vieux rose | Alte Rose | Rojo Viejo | Пудра



TR524 Verdone | Dark green | Vert foncé | Dunkel grün | Verde oscuro | Темно-Зеленый



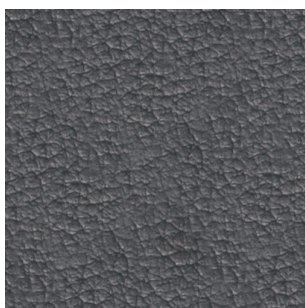
TR514 Blu | Blue | Bleu | Blau | Azul | Синий



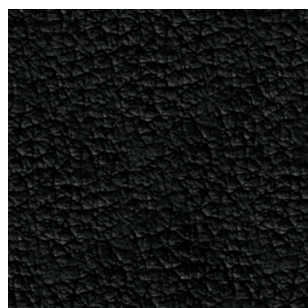
TR515 Blu cobalto | Cobalt Blue | Bleu Cobalt | Kobaltblau | Azul Cobalto | Синий кобальт



TR516 Grigio chiaro | Light grey | Gris clair | Hell grau | Gris claro | Светло-серый



TR517 Antracite | Anthracite | Anthracite | Anthrazit | Antracita | Антрацит



TR504 Nero | Black | Noir | Schwarz | Negro | Черный

PELLE ECOLOGICA

ECOLEATHER | CUIR ÉCOLOGIQUE | KUNSTLEDER | ECOPIEL | ЭКОЛОГИЧЕСКАЯ КОЖА

COMPOSIZIONE | COMPOSITION

50% poliuretano | polyurethane | polyuréthane | Polyurethan | poliuretano | полиуретан
33% cotone | cotton | coton | Baumwolle | algodón | хлопок
17% poliestere | polyester | polyester | Polyester | poliéster | полиэстер

SIMBOLOGIA | LIST OF SYMBOLS



RITIRO STIMATO | ESTIMATED SHRINKAGE

0%

ALTEZZA | WIDTH

140 cm | 55.1 inch

SPESSORE | THICKNESS

1,0 mm | 0.04 inch

SOLIDITÀ DEL COLORE ALLO SFREGAMENTO | COLOUR FASTNESS TO RUBBING

crockmeter ISO 105 X12

secco-dry 4/5

umido-wet 4/5

SOLIDITÀ DEL COLORE ALLA LUCE ARTIFICIALE AD ALTE TEMPERATURE

COLOUR FASTNESS TO ARTIFICIAL LIGHT AT HIGH TEMPERATURE

4/5 EN ISO 12945

xeno ISO 105 B06

5

SOLIDITÀ DEL COLORE ALLA LUCE ARTIFICIALE | COLOUR FASTNESS TO ARTIFICIAL LIGHT

xeno ISO 105 B02

4/5

RESISTENZA ALL'ABRASIONE | ABRASION RESISTANCE

bally - UNI EN 13512

80.000 cicli-rubs

RESISTENZA ALLE FLESSIONI DOPO JUNGLE TEST (H336)

RESISTANCE TO FLEXURES AFTER JUNGLE TEST (H336)

UNI 4818/92 P.29A + UNI EN 13512

50.000 cicli-rubs



IGNIFUGO | FIRE RETARDANT

USA California Bull 117 sez.E



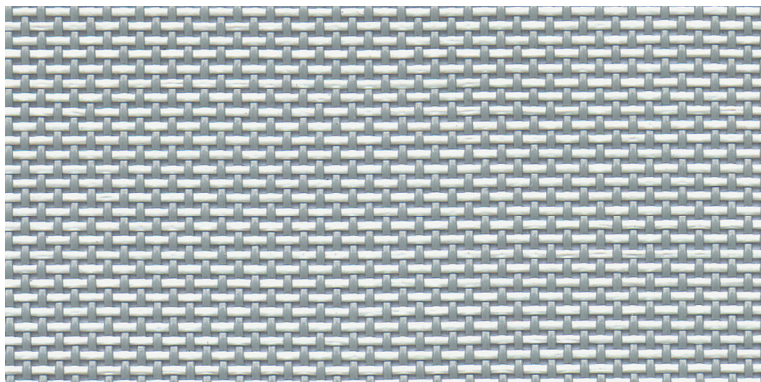
METODO DI PULIZIA | CLEANING INSTRUCTIONS

Per la pulizia utilizzare un panno di cotone umido e detergente neutro diluito con acqua.

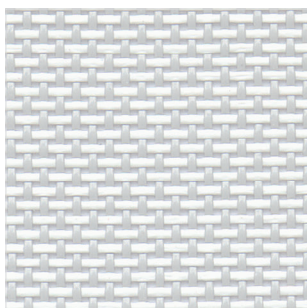
For cleaning, use a soft damp cloth and gentle detergent diluted with water.

TEXPLAST

TEXPLAST | TEXPLAST | TEXPLAST | TEXPLAST | ТЕКСПЛАСТ



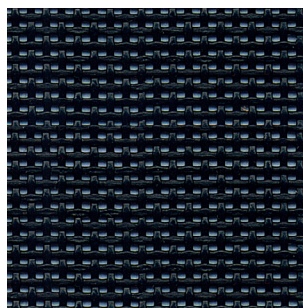
X036 Grigio | Grey | Gris | Grau | Gris | Серый



X039 Bianco | White | Blanc | Weiß | Blanco | белый



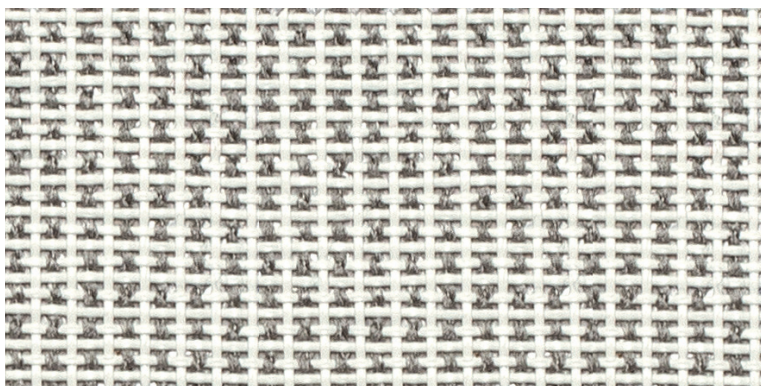
X040 Sabbia | Sand | Sable | Sand | Arena | Песочный



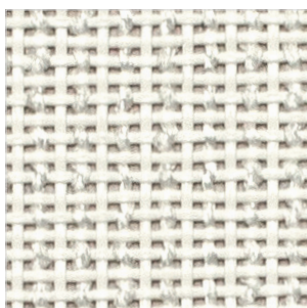
X035 Nero | Black | Noir | Schwarz | Negro | Черный

SOFT TEXPLAST

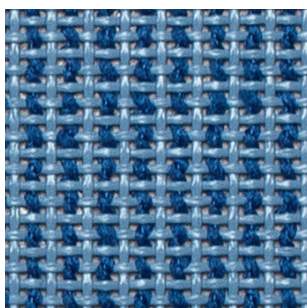
SOFT TEXPLAST | SOFT TEXPLAST | SOFT TEXPLAST | SOFT TEXPLAST | МЯГКИЙ ТЕКСПЛАСТ



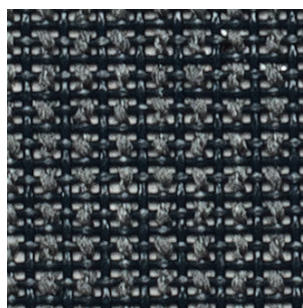
X112 Moon Rock | Moon Rock | Moon Rock | Moon Rock | Moon Rock | Лунный камень



X111 Bianco | White | Blanc | Weiß | Blanco | белый



X113 Ceruleo | Cerulean blue | Bleu céruleen | Hell blau | Cerúleo | Лазурный



X114 Antracite | Anthracite | Anthracite | Anthrazit | Antracita | Антрацит

TEXPLAST

TEXPLAST | TEXPLAST | TEXPLAST | TEXPLAST | ТЕКСПЛАСТ

COMPOSIZIONE | COMPOSITION

75% PVC | PVC | PVC | PVC | PVC | ПВХ
25% poliestere | polyester | polyester | Polyester | poliéster | полиэстер

SPESSORE | THICKNESS

1,15 mm | 0.045 inch

CARICO DI ROTTURA | BREAKING LOAD

UNI EN ISO 1421

Ordito | Warp 275 Kg - 5 cm | 607 lbs - 1.97 inch

Trama | Weft 240 Kg - 5 cm | 530 lbs - 1.97 inch

SOLIDITÀ DEL COLORE ALLO SFREGAMENTO | COLOUR FASTNESS TO RUBBING

EN ISO 105-x12:2003 - COL. 4165, 1101, 2102, 4154, 4014, 1195

5 - val. max

RESISTENZA A FATICA | STRESS RESISTANT

EN 1728:2000 - EN 15373:2007 - livello 3° severo / 3°hard level

>200.000 cycles / 1.000 N

RESISTENZA ALLA LUCE | LIGHT FASTNESS

EN 1728:2000 - EN 15373:2007 - livello 3° severo / 3°hard level

>200.000 cycles / 1.000 N

RESISTENZA ALL'ABRASIONE | ABRASION RESISTANCE

Martindale EN ISO 12947-2:1998

>100.000 cycles



METODO DI PULIZIA | CLEANING INSTRUCTIONS

Per la pulizia utilizzare un panno di cotone umido d'acqua.

For cleaning, use a soft damp cloth and gentle detergent diluted with water.

SOFT TEXPLAST

SOFT TEXPLAST | SOFT TEXPLAST | SOFT TEXPLAST | SOFT TEXPLAST | МЯГКИЙ ТЕКСПЛАСТ

COMPOSIZIONE | COMPOSITION

60% polivinile
40% poliestere | polyester | polyester | Polyester | poliéster | полиэстер

SPESSORE | THICKNESS

1,3 mm | 0.51 inch

CARICO DI ROTTURA | BREAKING LOAD

Ordito | Warp 220 Kg - 5 cm | 486 lbs - 1.97 inch

Trama | Weft 180 Kg - 5 cm | 398 lbs - 1.97 inch



METODO DI PULIZIA | CLEANING INSTRUCTIONS

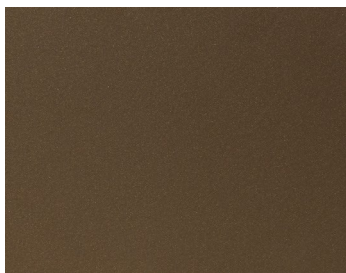
Per la pulizia utilizzare un panno di cotone umido d'acqua.

For cleaning, use a soft damp cloth and gentle detergent diluted with water.

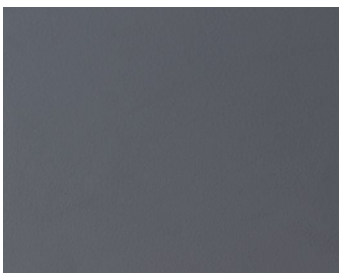
FINITURE LETTI IN FERRO | FINISH IRON BEDS

LACCATE

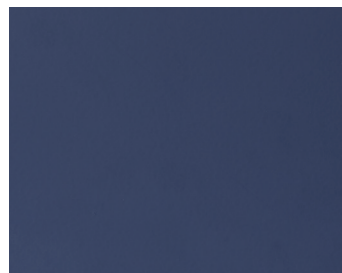
LACQUERED | LAQUÉ | LACKIERT | LACADAS | ЛАКИРОВАННЫЙ



M028 Ottone scuro | Dark brass |
Laiton foncé | Dunkelmessing |
Latón oscuro | Темная латунь



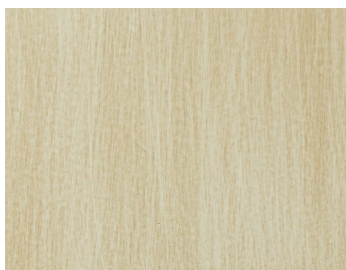
M063 Grigio | Grey | Gris | Grau | Gris |
Серый



M062 Blu | Blue | Bleu | Blau | Azul |
Синий

PATINATE A MANO

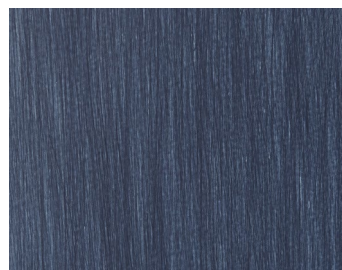
HAND-COATED | MAIN ENDUITE | HAND PATINIERT | PATINADAS A MANO | ПАТИНИРОВАННЫЙ ВРУЧНУЮ



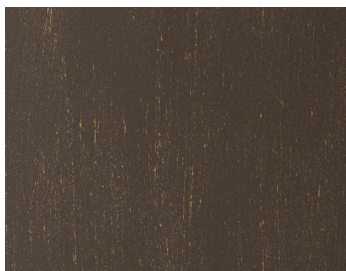
N094 Avorio | Ivory | Ivoire | Elfenbeinfarbe |
Marfil | Слоновая кость



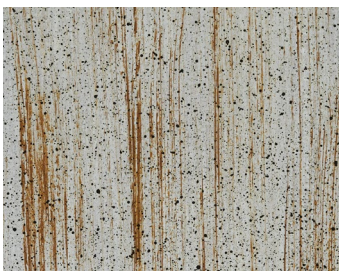
N052 Grigio | Grey | Gris | Grau | Gris |
Серый



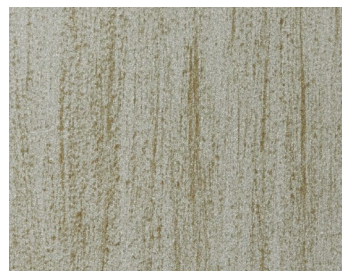
N045 Blu cobalto | Cobalt Blue |
Bleu de cobalt | Kobaltblau |
Azul cobalto | Синий кобальт



N076 Testa di moro | Dark Brown |
Marron foncé | Dunkelbraun |
Marrón oscuro | Темно-коричневый



N099 Argento decapè | Pickled silver leaf |
Feuille d'argent décapé | Silber
decapé | Plata decapé |
Серебро декапе



N096 Argento patinato oro | Gold coated
silver | Feuille d'argent patiné or |
Silber patiniert Gold |
Plata patinada oro |
Серебро патинированное золотом

